

Scan Engine Firmware Update Tool Reference Program

Follow along to pick the appropriate selections from box 1 to box 4. Once you make your selection other choices will become available to you. Continue until you have made all your selections before hitting the START button.

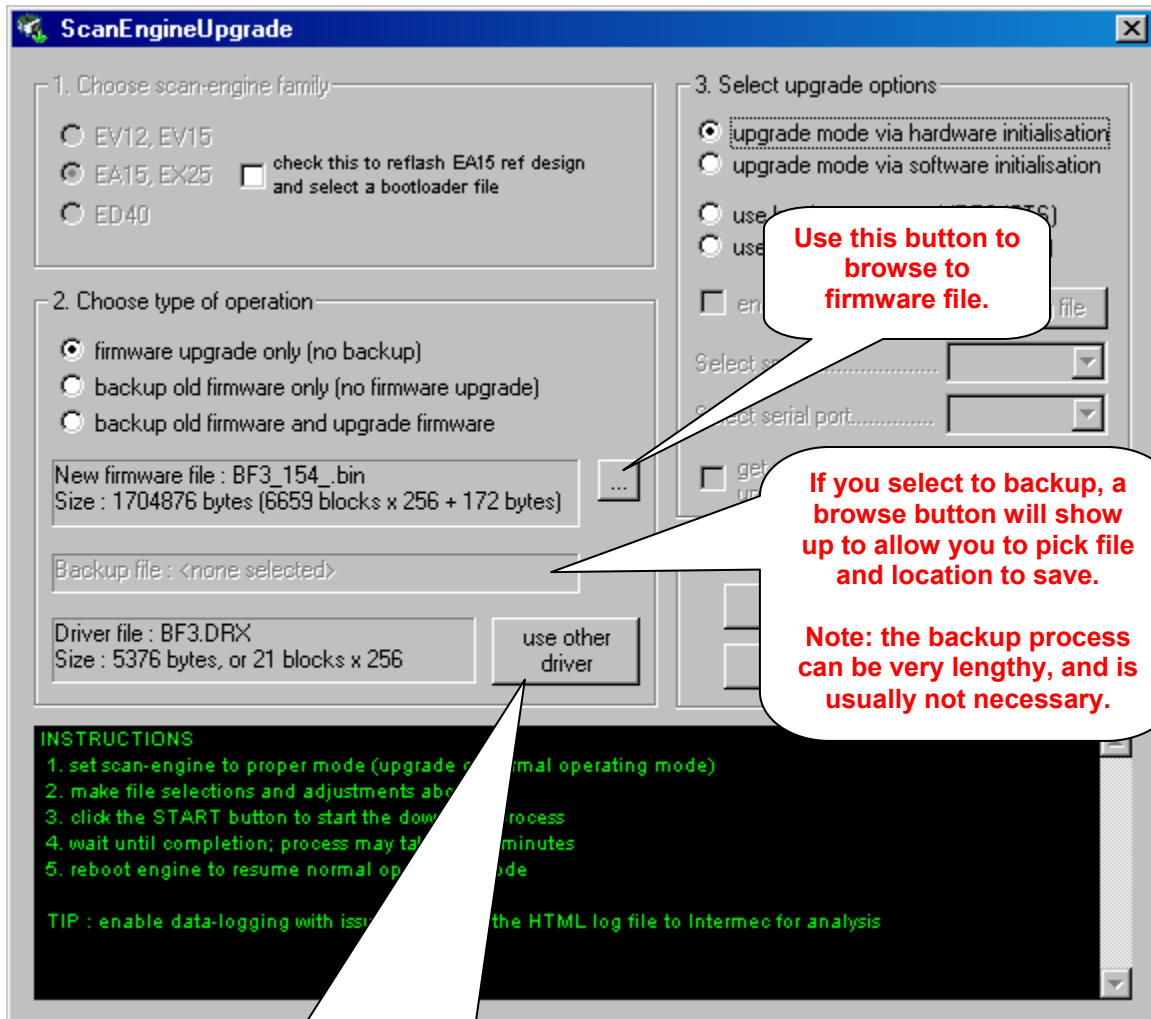
Note: the ScanEngineUpgrade.exe application has been designed to run on WinXP environments.

The screenshot shows the ScanEngineUpgrade application window. It has a blue title bar with the text 'ScanEngineUpgrade'. The window is divided into several sections:

- 1. Choose scan-engine family:** Contains three radio buttons: 'EV12, EV15', 'EA15, EX25', and 'ED40'. A checkbox labeled 'check this to reflash EA15 ref design and select a bootloader file' is next to the 'EA15, EX25' option. A callout bubble points to this section with the text 'Product selection'.
- 2. Choose type of operation:** Contains three radio buttons: 'firmware upgrade only (no backup)', 'backup old firmware only (no firmware upgrade)', and 'backup old firmware and upgrade firmware'. Below these are three text boxes: 'New firmware file : <none selected>', 'Backup file : <none selected>', and 'Driver file : <none selected>'.
- 3. Select upgrade options:** Contains four radio buttons: 'upgrade mode via hardware initialisation', 'upgrade mode via software initialisation', 'use hardware protocol (RTS/CTS)', and 'use software protocol (ACK mode)'. Below these are a checkbox 'enable data logging' with an 'open log file' button, two dropdown menus for 'Select speed' and 'Select serial port', and a checkbox 'get version only (i.e. no flash erase, no upgrade and no backup)'.
- 4. Start firmware upgrade:** Contains two buttons: 'START' and 'REPEAT'. An 'About...' button is also present.
- INSTRUCTIONS:** A section at the bottom with green text listing five steps: 1. set scan-engine to proper mode (upgrade or normal operating mode), 2. make file selections and adjustments above, 3. click the START button to start the download process, 4. wait until completion; process may take a few minutes, 5. reboot engine to resume normal operating mode. Below this is a 'TIP : enable data-logging with issues and send the HTML log file to Intermec for'.

Callouts include:

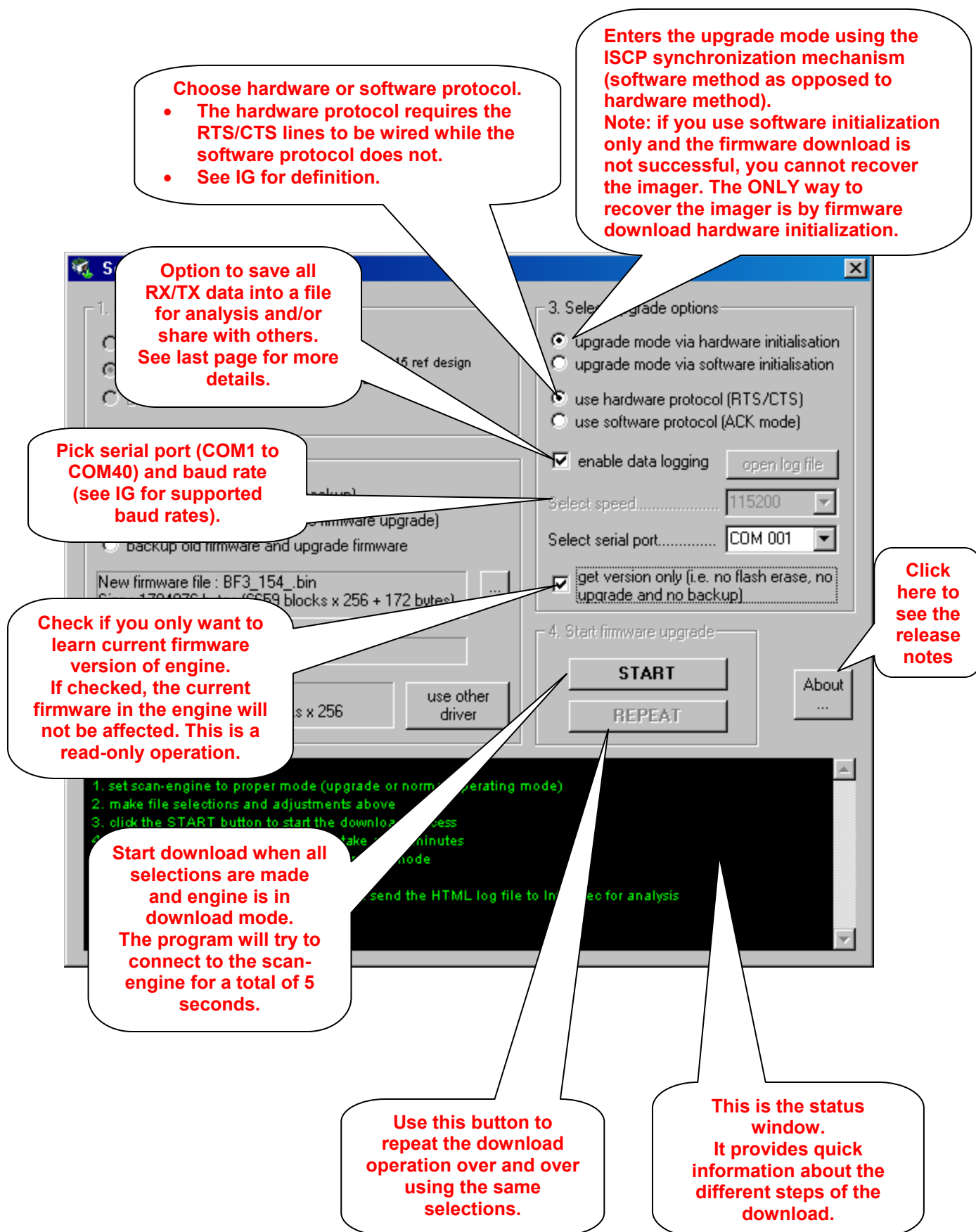
- 'Product selection' pointing to the '1. Choose scan-engine family' section.
- 'Check version info on firmware update tool.' and 'The current version at this time is 1.0.1.6' pointing to the 'About...' button.



The program will pick the default and recommended driver file automatically *

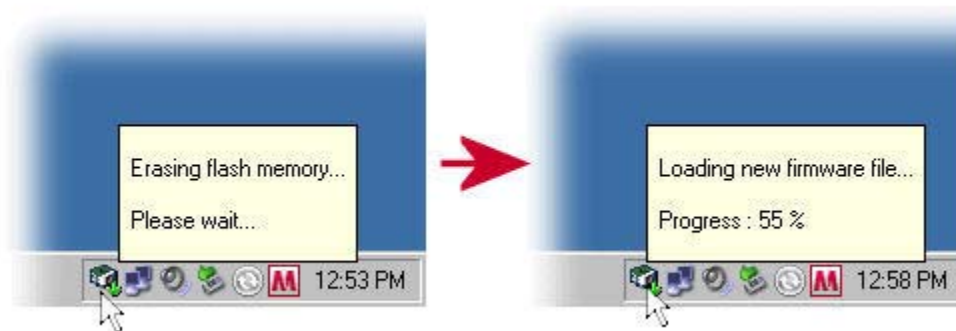
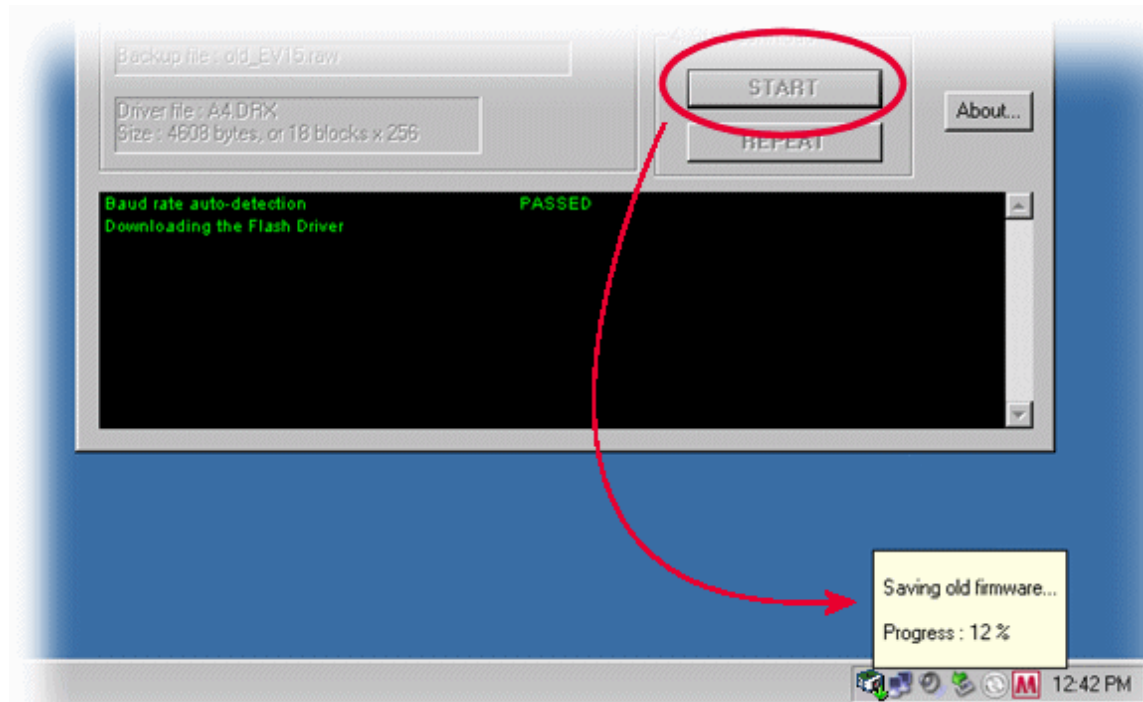
*** for this feature to work the drivers files need to be in the same folder as the executable !!!**

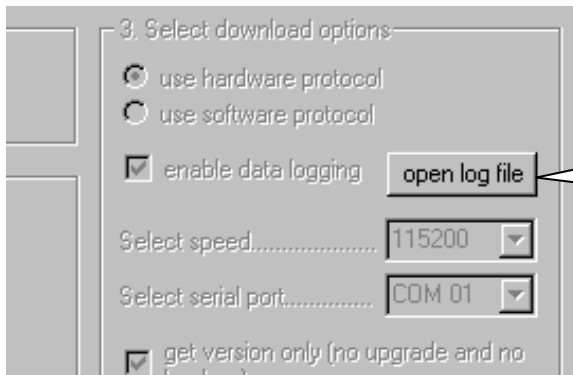
If you need to point to another driver, click this button and pick an alternate driver file.



During the Flash Erase cycle, the firmware backup cycle and the firmware download cycle the window will be minimized to the system tray as pictured below. The window will reappear upon completion (or if an error is detected).

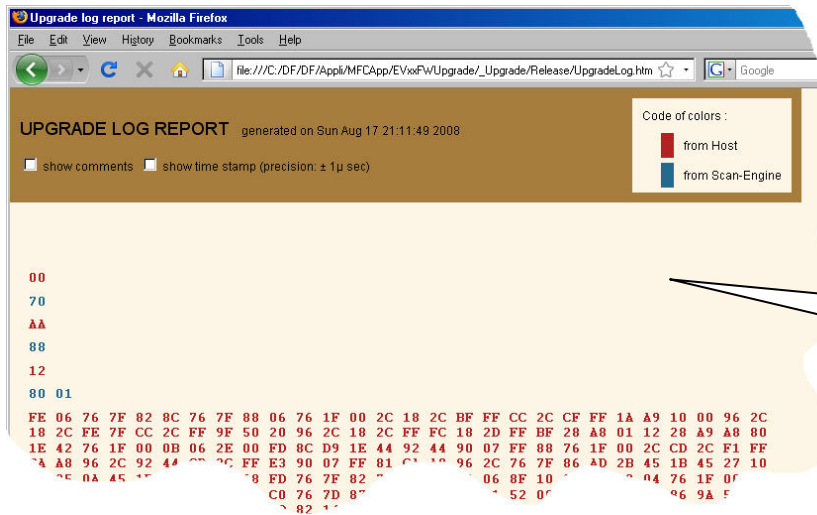
Optional: move the mouse over the minimized icon to display progress.



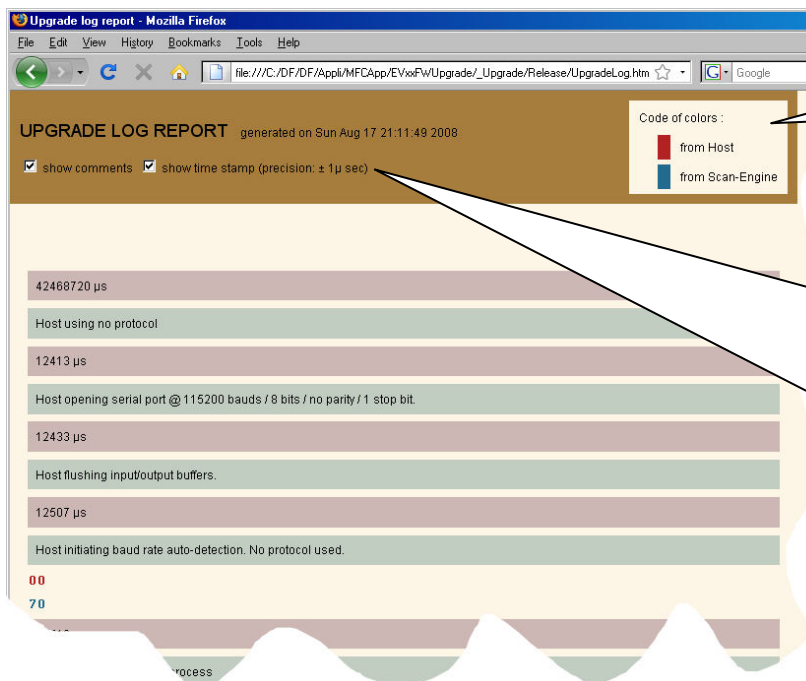


This button will become available after the download is complete. It will open the log file in your default web browser as pictured below.

Note: in order to open the file you need to enable JavaScript and/or active content in your web browser settings.



This is what the log file will look like in your web browser.



Look at the code of colors to identify RX and TX data.

See additional information by clicking the "show comments" check box.

Click other checkbox to see time stamp (precision: +/- 1 micro second)

Note: depending on how big the log file is AND the speed of your PC it may take a few seconds for the screen to refresh after you hit this check box.